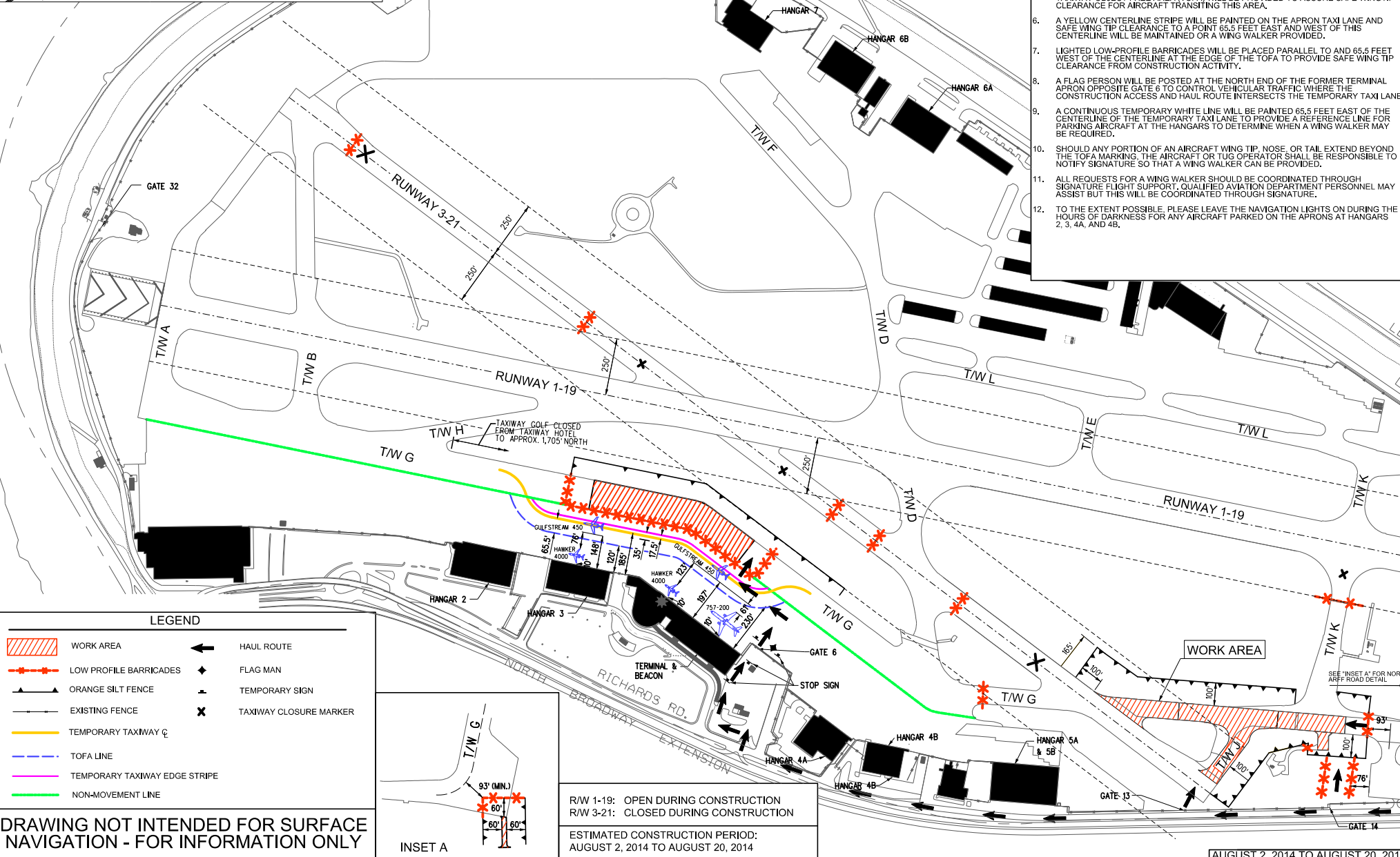
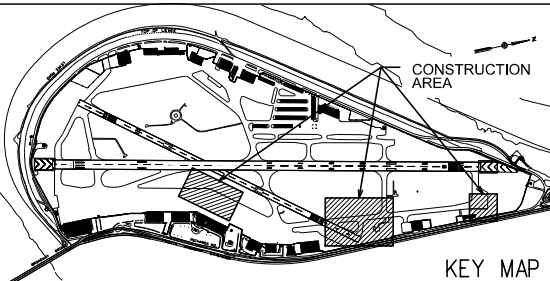


2014 TAXIWAY PAVEMENT REHABILITATION EXHIBIT 2

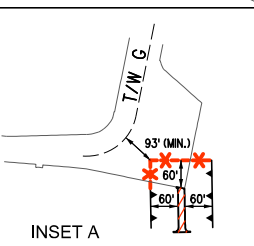
- ### OPERATING CONDITIONS
- RUNWAY 3/21 WILL BE CLOSED DURING THIS CONSTRUCTION PERIOD.
 - ALL PORTIONS OF TAXIWAY GOLF, JULIET AND KILO WILL BE CLOSED DURING THIS PHASE OF CONSTRUCTION. PLEASE REFER TO THE TAXIWAY OPERATIONS DURING CONSTRUCTION TABLE FOR A DESCRIPTION OF THE EXTENT OF EACH CLOSURE.
 - TRAFFIC NEEDING TO TRANSIT THE CLOSED PORTION OF TAXIWAY GOLF FROM TAXIWAY HOTEL TO APPROXIMATELY 1,705 FEET NORTH WILL UTILIZE A TEMPORARY 35 FOOT WIDE TAXI LANE ON ADJACENT APRONS, WHERE IT TRAVERSES AN APRON, THE TEMPORARY TAXI LANE SHALL REMAIN A NON-MOVEMENT AREA.
 - AIRCRAFT WITH A WINGSPAN THAT EXCEEDS 79 FEET WILL BE PROHIBITED BY NOTAM FROM USING THE TEMPORARY APRON TAXI LANE.
 - ALTHOUGH THE TAXI LANE WILL REMAIN A NON-MOVEMENT AREA, A 131 FOOT WIDE TAXIWAY OBJECT FREE AREA (TOFA) WILL BE PROVIDED TO ASSURE SAFE WINGTIP CLEARANCE FOR AIRCRAFT TRANSITING THIS AREA.
 - A YELLOW CENTERLINE STRIPE WILL BE PAINTED ON THE APRON TAXI LANE AND SAFE WING TIP CLEARANCE TO A POINT 65.5 FEET EAST AND WEST OF THIS CENTERLINE WILL BE MAINTAINED OR A WING WALKER PROVIDED.
 - LIGHTED LOW-PROFILE BARRICADES WILL BE PLACED PARALLEL TO AND 65.5 FEET WEST OF THE CENTERLINE AT THE EDGE OF THE TOFA TO PROVIDE SAFE WING TIP CLEARANCE FROM CONSTRUCTION ACTIVITY.
 - A FLAG PERSON WILL BE POSTED AT THE NORTH END OF THE FORMER TERMINAL APRON OPPOSITE GATE 6 TO CONTROL VEHICULAR TRAFFIC WHERE THE CONSTRUCTION ACCESS AND HAUL ROUTE INTERSECTS THE TEMPORARY TAXI LANE.
 - A CONTINUOUS TEMPORARY WHITE LINE WILL BE PAINTED 65.5 FEET EAST OF THE CENTERLINE OF THE TEMPORARY TAXI LANE TO PROVIDE A REFERENCE LINE FOR PARKING AIRCRAFT AT THE HANGARS TO DETERMINE WHEN A WING WALKER MAY BE REQUIRED.
 - SHOULD ANY PORTION OF AN AIRCRAFT WING TIP, NOSE, OR TAIL EXTEND BEYOND THE TOFA MARKING, THE AIRCRAFT OR TUG OPERATOR SHALL BE RESPONSIBLE TO NOTIFY SIGNATURE SO THAT A WING WALKER CAN BE PROVIDED.
 - ALL REQUESTS FOR A WING WALKER SHOULD BE COORDINATED THROUGH SIGNATURE FLIGHT SUPPORT, QUALIFIED AVIATION DEPARTMENT PERSONNEL MAY ASSIST BUT THIS WILL BE COORDINATED THROUGH SIGNATURE.
 - TO THE EXTENT POSSIBLE, PLEASE LEAVE THE NAVIGATION LIGHTS ON DURING THE HOURS OF DARKNESS FOR ANY AIRCRAFT PARKED ON THE APRONS AT HANGARS 2, 3, 4A, AND 4B.

TAXIWAY OPERATIONS DURING CONSTRUCTION					
TAXIWAY	OPEN	CLOSED	TAXIWAY	OPEN	CLOSED
TAXIWAY A	X		TAXIWAY H	X	
TAXIWAY B	X		TAXIWAY J		X
TAXIWAY D	X		TAXIWAY K		X****
TAXIWAY E	X		TAXIWAY L	X	
TAXIWAY F	X		TAXIWAY L-1	X	
TAXIWAY G		X***	TAXIWAY L-2	X	
			TAXIWAY L-3	X	
***CLOSED BETWEEN RWY 3-21 AND TWY K					
****CLOSED EAST OF RWY 1-19 ONLY					



LEGEND

	WORK AREA		HAUL ROUTE
	LOW PROFILE BARRICADES		FLAG MAN
	ORANGE SILT FENCE		TEMPORARY SIGN
	EXISTING FENCE		TAXIWAY CLOSURE MARKER
	TEMPORARY TAXIWAY C		
	TOFA LINE		
	TEMPORARY TAXIWAY EDGE STRIPE		
	NON-MOVEMENT LINE		



R/W 1-19: OPEN DURING CONSTRUCTION
 R/W 3-21: CLOSED DURING CONSTRUCTION

ESTIMATED CONSTRUCTION PERIOD:
 AUGUST 2, 2014 TO AUGUST 20, 2014

AUGUST 2, 2014 TO AUGUST 20, 2014

DRAWING NOT INTENDED FOR SURFACE NAVIGATION - FOR INFORMATION ONLY